

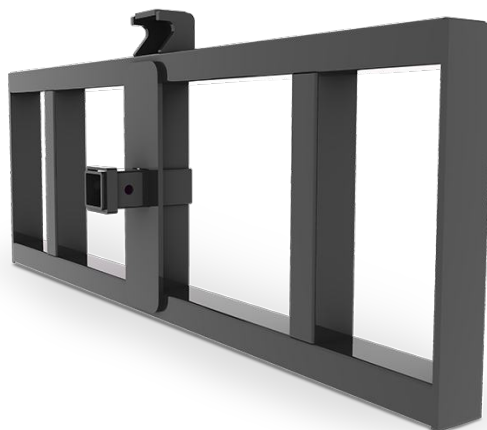


Stephenson's
RENTAL SERVICES

SKID STEER ATTACHMENTS TRAILER HITCH

Product Specifications

Cat Class	# 190-6679
Make	HLA Attachments
Weight	160 lbs.



Product Description

- 2" Receiver
- Ideal for moving light trailers around the yard
- Ball hitch mount on top of frame for moving goose neck trailer
- Max gross trailer weight 9000 lbs
- Max tongue weight 800 lbs

