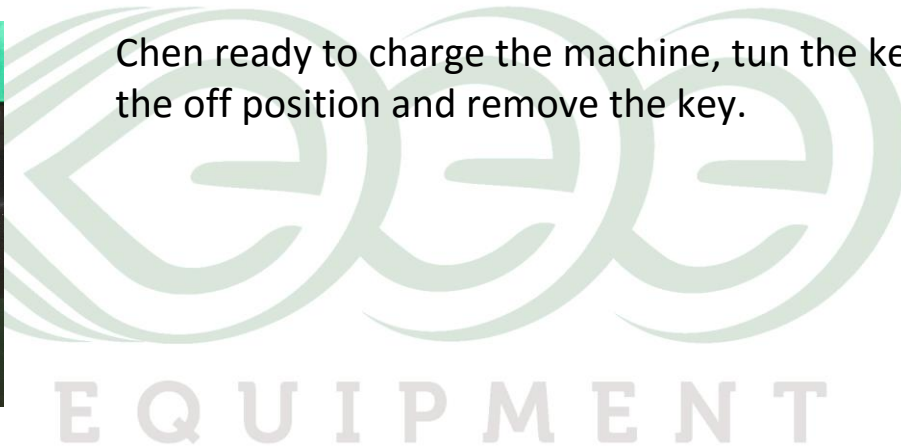




When the 100ECO battery indicator gets at or below 20% the battery indicator will turn from Green to Red. This indicates that it is time to charge the machine. Charging the machine if it is above 20% is ok, but overtime it will decrease the work-hour life of the battery.



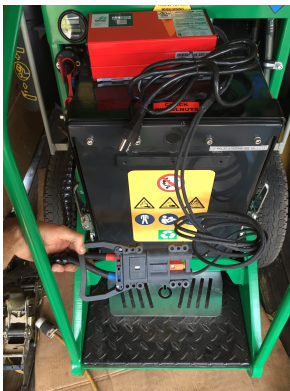
When ready to charge the machine, turn the key to the off position and remove the key.



Unplug the battery cable from the machine.



Set the 110V charging station on a flat horizontal surface. A good spot for the charger is either on top of the back of the battery or on the foot pedal switch on the machine.



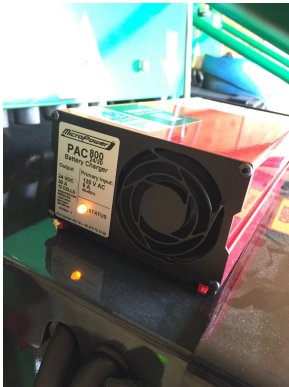
Plug the battery cable into the battery cable connector on the 110V charger.



Connect the standard 110V plug directly to a power source. Preferably directly to the wall but if you are not close enough an extension cable will work. If using an extension cable, do not use anything over a 50ft long any smaller than a 12 gauge cord.

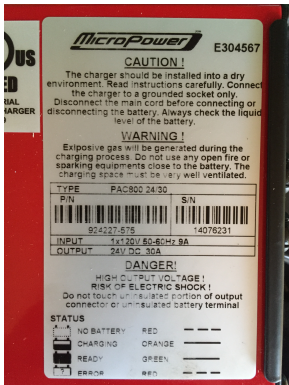


Once everything is connected, flip to switch from the "O" indicator to the "-" indicator. This should initiate the charger and the exhaust fan will begin to spin. Check the front panel to make sure you have an Orange LED light illuminated



If everything was done correctly and in the correct order, the LED light on the front panel will show an Orange light.

EQUIPMENT



When the machine is done charging, the LED will light up Green. The charger will automatically stop charging the machine when it is completely charged. If the charger is left on for more than 2 hours past a full charge, the LED will blink Red indicating that it is time to remove the charger.