

Haugen

Work Platforms

(Model # MWP 4X8)

(Model # MWP 4X116)

- **Operators Manual**
- **Warning Stickers**
- **ANSI Standards**



Haugen

Marv Haugen Enterprises

602 1st Street N

Casselton, ND 58012

Toll Free 877-580-6218

Phone: 701-347-4827 Fax: 701-347-4830

Haugen

Marv Haugen Enterprises

602 1st Street N

Casselton, ND 58012

Toll Free 877-580-6218

Phone: 701-347-4827 Fax: 701-347-4830

Document Includes

Operator's Manual and Safety Instructions For:

- Industrial Work Platforms
- Quick Attach Work Platforms

(Copy of Marv Haugen Enterprises Product Liability Insurance is available upon request)

Work Platforms are designed to elevate personnel and small tools using extendable reach forklifts or rough terrain mast style forklifts. Note: All mast style forklifts require our high back mesh back rest that prevents accidental contact with the mast.

All Haugen Work Platforms are built in compliance with ANSI/ITSDF B56.6-2011 Safety Standards for Rough Terrain Forklifts. This standard meets all of the OSHA requirements and most of the Canadian requirements.



Haugen Work Platforms exceed the Structural requirements that allow us to rate the Work Platforms at 1000 lbs capacity. Operator's should consult their forklift manual to assure that the forklift being used has the necessary capacity.

Maximum Platform length can be 10 inches past each side of the load bearing tires. Therefore a machine with a 8 foot load bearing width or greater can use a 116" wide Platform (model # MWP 4X116). To use our 8 foot Platform (Model # MWP 4x8) the machine must have a minimum load bearing width of 76 inches. When equipped, outriggers should be used for increased stability.

General Safety Rules

1. Only qualified and trained personnel should operate the forklift. The operator must remain on the forklift while personnel are elevated.
2. All Safety Regulations must be followed at all times.
3. Operator must not be under the influence of alcohol or drugs.
4. Before each use check the Platform for any damage or missing safety items. Repair or replace these items before using. Also do a complete inspection of the host machine.
5. Do not overload the platform or the forklift. The combined weight of the platform and the load (material and personel - maximum 1000 lbs.), shall not exceed one-third of the capacity of the rough terrain forklift (1/2 of the capacity for industrial lift trucks) at the related load center position as indicated on the forklift capacity chart.
6. On Fork mounted Platforms be sure to install the steel pin in the fork channel behind the heel of the fork using the hair pin to secure it. Quick Attach style must be used only on the quick attach system it was built for. Be sure all of the locking mechanisms are secure.
Note: The optional end fork slots are for loading and unloading only. Never use end forks to lift personnel.
7. Work Platforms should always be level or rolled back, never tilted forward. Forklift must always be level when using a platform



General Safety Rules - continued

8. Personnel should only enter the Work Platform when it is in the final working location. It should never be used to transport personnel.
9. All guard rails must be in place and pinned when in use. They may be collapsed for transport.
10. Check for overhead hazards before elevating personnel.
11. Make sure to have an excellent communication system between the operator and the personnel being elevated.
12. All Platforms are equipped with safety restraint tie downs. We encourage personnel to use them at all times.
13. Never use a Work Platform without a high back mesh back rest on a mast style forklift.
14. Warn all other workers that elevated personnel are working in the area.
15. Never use a ladder or risers in a Work Platform.
16. Refer to a Forklift Safety Manual for other safety tips and regulations.



Attaching your Work Platform to your Rough Terrain Forklift

- Before each use check the Platform for any damage or missing safety items. Repair or replace these items before using. Also do a complete inspection of the host machine.
- Insert your fork tines fully into the fork pockets of the Work Platform. Then install the steel pin in the fork channel behind the heel of the fork using the hair pin to secure it. Quick Attach style must be used only on the quick attach system it was built for. Be sure all of the locking mechanisms are secure.
Note: The optional end fork slots are for loading and unloading only. Never use end forks to lift personnel.
- Make sure that all of the Gaurdrailings are installed and all of the pins are in place. Then make sure to install the Door Safety pin in it's locked position after you have entered the platform.
- Attach your lanyard or safety harness to the bar marked Safety Restraint Tie Down on the backside of the Work Platform.
- There must be a certified Lift Truck operator in the cab of the forklift to lift and lower the personnel. the operator must remain in the Lift Truck at all times when there are personnel in the Work Platform. However they cannot drive the Forklift under any conditions with personnel in the Work Platform.



Fork Pocket Safety pin installed



Fork Pocket Ears with Safety Pin



Latch pin and Guardrailings pins



**Door Safety Pin
(Locked Position)**



Marv Haugen Enterprises
602 1st Street N
Casselton, ND 58012
Toll Free 877-580-6218
Phone: 701-347-4827 Fax: 701-347-4830

Haugen Work Platform Features

1. Complies with ANSI/ITSDF B56.6-2011, Safety Standards for Rough Terrain Forklifts
2. Steel mesh floor is capped on both ends.
3. Toe kicks are flush with the floor and are 6 inches high.
4. All guardrails are collapsible for ease transportation. They are also capped eliminating sharp corners
5. Doors or endgates have 2 safety pins for extra security.
6. All Platforms have a Safety Restraint Bar.
7. Inside working area of the Work Platform is a full 4 feet.
8. Optional end forks are for loading and unloading only.
9. All safety pins and latch pins are either chained or cabled to the platform so they do not fall off or get lost.
10. All platforms have the proper safety and capacity stickers.

Work Platform Stickers



One on the back of each Work Platform



One on the back of each Work Platform



(2) One on each door of the Work Platform



One on the back of each Work Platform

Haugen

Marv Haugen Enterprises
602 1st Street N
Casselton, ND 58012
Toll Free 877-580-6218
Phone: 701-347-4827 Fax: 701-347-4830

WARNING

**End Fork Slots
are for loading and
unloading only**

One right above the End Fork Slots (Optional)

WARNING

**Empty Weight of the
Work Platform (531 LBS)

(Model # MWP 4x8)**

One on the back of each Work Platform

WARNING

**All Guard Rails and
Doors must be
installed and pinned
down when in use**

One on the back of each Work Platform

WARNING

**Empty Weight of the
Work Platform (598 LBS)

(Model # MWP 4x116)**

Safety Restraint Tie Down

(2) One by each end of the tie down bar

Haugen

Marv Haugen Enterprises
602 1st Street N
Casselton, ND 58012
Toll Free 877-580-6218
Phone: 701-347-4827 Fax: 701-347-4830

WARNING

**Host Machines minimum
wheel track must be 76
inches wide to operate this
Work Platform**

(Model # MWP 4x8)

One on the back of each MWP 4x8 Work Platform

WARNING

**Host Machines minimum
wheel track must be 96
inches wide to operate this
Work Platform**

(Model # MWP 4x116)

One on the back of each MWP 4x116 Work Platform

WARNING

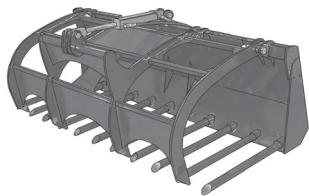
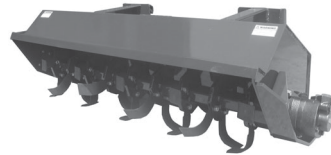
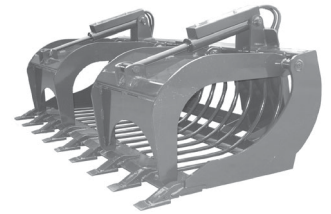
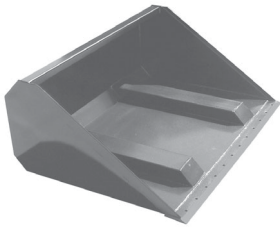
**Maximum Capacity
1000 LBS**

* These lift capacity ratings are for the Work platform only. The lifting capacity is ultimately determined by the host machine. Never lift more than the operating capacities of this Work Platform or the capacities stated by the Manufacturer of the host machine.

One on the back of each Work Platform

Haugen

Marv Haugen Enterprises Inc.
602 1st Street N - Casselton, ND 58012
Toll Free 877-580-6218
Phone: 701-347-4827 Fax: 701-347-4830
Website: www.haugenattachments.com



Haugen