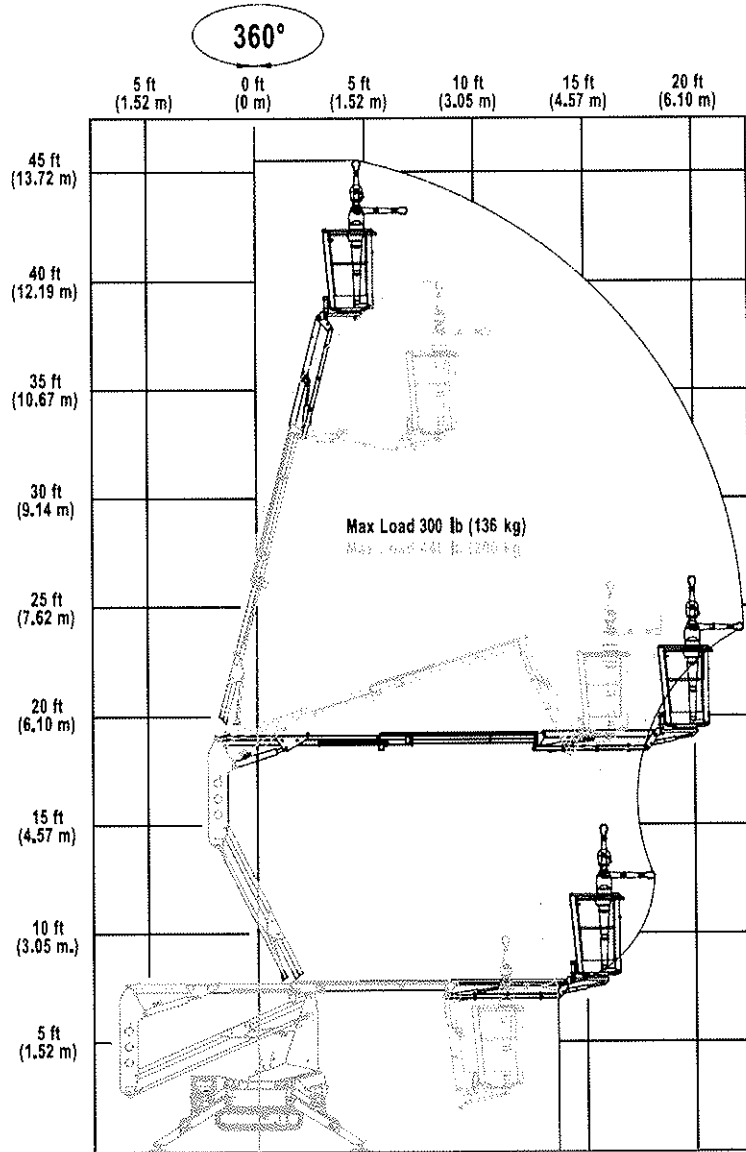


3128791

- JLG Lift -

4-17

Figure 4-4. Platform - Load/Reach Chart



SECTION 4 - MACHINE OPERATION

SECTION 6 - GENERAL SPECIFICATIONS AND OPERATOR MAINTENANCE

6.2 OPERATING SPECIFICATIONS

Table 6-1. Operating Specifications

Model	X550AJ
Maximum work load (capacity)	Unrestricted: 300 lb. (136 kg) Restricted: 440 lb. (200 kg)
Max. Vertical Platform Height	Unrestricted: 61.5 ft (18.77 m) Restricted: 55.9 ft (17.06 m)
Max. Horizontal Platform Reach	Unrestricted: 20.0 ft (6.4 m) Restricted: 15.74 ft (4.8 m)

Dimensional Data

Table 6-2. Dimensional Data

Model	X550AJ
Overall Width (with platform removed)	31 in (0.77 m)
Outriggers Deployed Width	9 ft 6 in x 9 ft 5 in (2.8 m x 2.8 m)
Stowed Height	6 ft 6 in (1.98m)
Stowed Length	14 ft 8 in (4.47m)
Approach angle	with Jib lowered: 21°

Table 6-2. Dimensional Data

Model	X550AJ
Departure angle	21°

Chassis

Table 6-3. Chassis Data

Model	X550AJ
Maximum Travel Grade w/ boom in stowed position (gradeability)	21° (38.4%)
Maximum Travel Side Slope w/ boom in stowed position	11° (19%)
Turning radius	0°
Maximum ground pressure per track (psi)	7 psi (0.49 kg/cm ²)
Maximum ground pressure per outrigger	24.18 psi (1.7 kg/cm ²)
Maximum outrigger pad load	4,720 lb. (2,141 kg)
Outrigger pad diameter	11.8 in (300 mm)
Max drive speed	0.80 mph (1.3 km/hr)
Max hydraulic system pressure	2901 psi (200 bar)
Maximum wind speed	28 mph (12.5m/s)
Maximum manual force	90 lb (400 N)
Electrical system voltage	12V

SECTION 6 - GENERAL SPECIFICATIONS AND OPERATOR MAINTENANCE

Table 6-3. Chassis Data

Model	X550AJ
Gross machine weight (platform empty)	4,630 lb. (2098 kg)

Capacities

Table 6-4. Capacities

Model	X550AJ
Hydraulic Tank	6.6 gal (25 L)
Fuel Tank	Gasoline: 1.5 gal (5.9 L) Diesel: 1.3 gal (5 L)
Engine Oil	Gasoline: 0.3 gal (1.1 L) Diesel: 0.53 gal (2.01 L)

Engine Data

Table 6-5. Honda iGX440 Specifications

Model	X550AJ
Type	Air cooled
Number of cylinders	1
Displacement	27 cu. in. (440 cm ³)
Output	14.8 hp (11 kW)
High engine speed	3600 RPM

Table 6-6. Hatz 1B40 Specifications

Model	X550AJ
Type	Air Cooled
Number of cylinders	1
Displacement	28.19 cu. in. (462 cm ³)
Output	10.0 hp (7.46 kW)
High engine speed	3000 RPM