
TECHNICAL DATA SHEET

AETJ 49

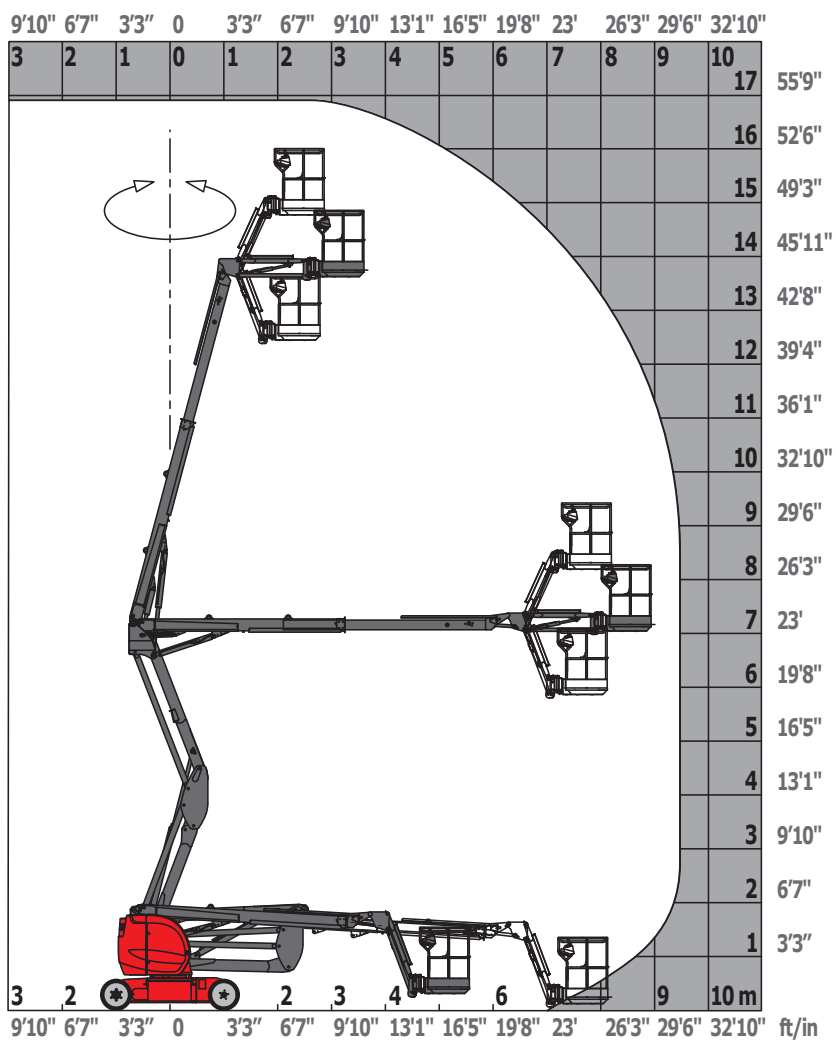
Self-propelled articulating boom - Electric



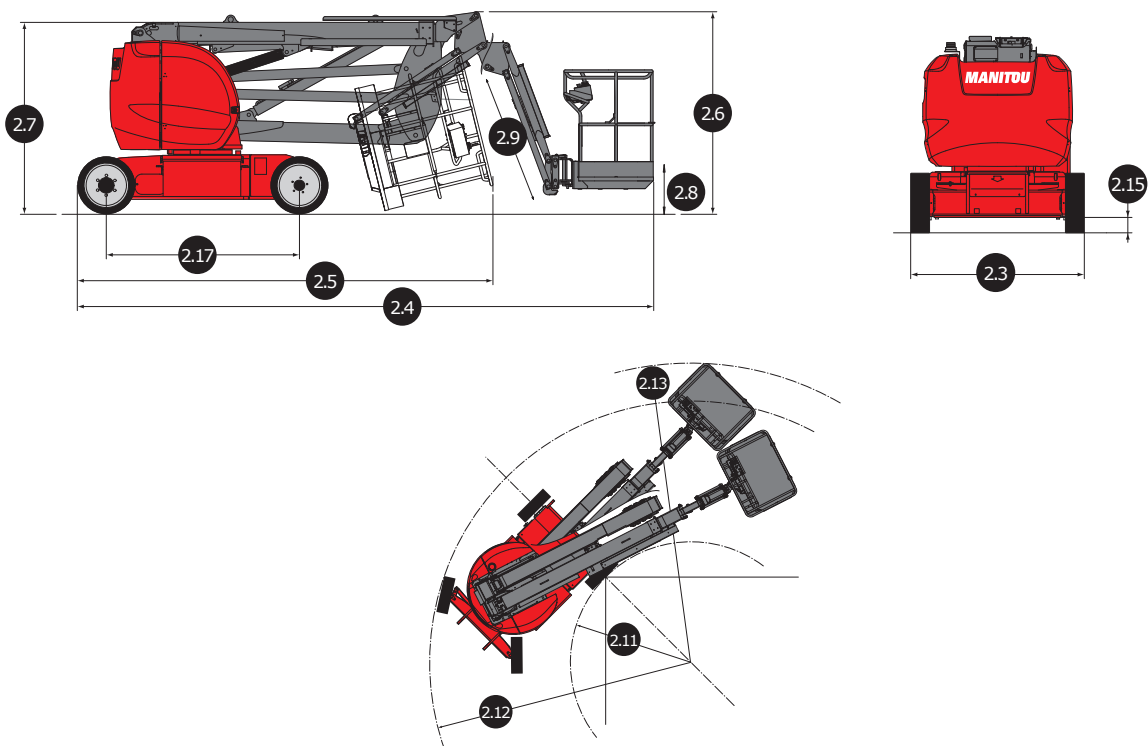
Capacities	metric	imperial
Platform height	14.90 m	48'11"
Horizontal outreach	9.43 m	30'11"
Overhang	7 m	22'11"
Vertical jib rotation	65° / 65°	65° / 65°
Platform capacity	227 kg	500 lbs
Turret rotation	355°	355°
Platform rotation (right/left)	66° / 59°	66° / 59°
Number of people (inside/outside)	2 / 2	2 / 2
Weight and dimensions		
Weight of the machine	7095 kg*	15,642 lbs*
Platform dimensions (L x W)	1.2 x 0.92 m	3'11" x 3'
2-3 Overall width	1.75 m	5'9"
2-4 Overall length	6.84 m	22'5"
2-5 Overall length (retracted)	5.12 m	16'9"
2-6 Overall height (retracted)	2.04 m	6'8"
2-7 Overall height	1.97 m	6'6"
2-8 Floor height (access)	0.40 m	1'4"
Turnable tailswing	0.08 m	3"
2-11 Turnable radius - Inside	2 m	6'7"
2-12 Turnable radius - Outside	4.30 m	14'1"
2-15 Ground clearance at center of frame	0.14 m	5'5"
2-17 Wheelbase	2 m	6'7"
Performances		
Travel speed	5 km/h	3.11 mph
Working speed	0.60 km/h	0.4 mph
Gradeability	22%	22%
Tires		
Type of tires	Solid non-marking	Solid non-marking
Dimensions (Ø x W)	0.6 x 0.19	1'11" x 7"
Drive wheels	Rear	Rear
Steering wheels	Front	Front
Braking wheels	Rear	Rear
Electric motor		
Electric engine power rating	2 x 4.50 kW	2 x 4.50 kW
Electric pump	3.70 kW	3.70 kW
Battery	48V / 240Ah	48V / 240Ah
Integrated charger	48V / 30AH	48V / 30AH
Miscellaneous		
Maximum available hydraulic pressure	210 bar	3047 psi
Capacity of hydraulic tank	15 l	4 US gal
Number of cycle with std battery depending EARL cycle	44	44

*Changes according to options and standard of the country where the machine will be delivered.

Load chart



Dimensional drawing



Features

Standard

- 110V plug with differential circuit-breaker
- Audible alarm and illuminated indicator lamp (leveling, overload, lowering)
- Battery charge indicator lamp
- CAN Bus technology
- Emergency stop button in platform and on frame
- Horn in platform
- Hour meter
- Integrated diagnostic aid
- Emergency manual pump
- Multi-voltage integrated charger
- Negative-type braking on rear wheels
- Non-marking rubber tires
- Jib
- Swinging gate platform
- Proportional controls
- Tie-down rings
- Tool box in platform
- Traction battery

Options

- Beep on every movement
- Beep upon travel
- Beacon light
- Cold kit
- Protective cover for control panel
- SMS: Safe Man System
- Working headlight in platform
- Easy MANAGER
- Predisposition compressed air
- Predisposition of water
- High capacity battery (48V / 360 Ah)
- Drive safety orientation system
- Biodegradable oil



Manitou North America, LLC
P.O. Box 179 - West Bend, WI 53095
Tel: (262) 334-9461 - Fax: (262) 338-7517
manitou.com



This brochure describes versions and configuration options for Manitou products which may be fitted with different equipment. The equipment described in this brochure may be standard, optional or not available depending on version. Manitou reserves the right to change the specifications shown and described at any time and without prior warning. The manufacturer is not liable for the specifications given. For more information, contact your Manitou dealer. Non-contractual document. Product descriptions may differ from actual products. List of specifications is not comprehensive. The logos and visual identity of the company are the property of Manitou and may not be used without authorisation. All rights reserved. The photos and diagrams contained in this brochure are provided for information only.
MANITOU BF SA - Limited company with board of directors - Share capital: 39,547,824 euros - 857 802 508 RCS Nantes