



# XGA60ACJ

MOBILE ELEVATING WORK PLATFORM

Comply with ANSI/CSA



# XGA60ACJ

## MOBILE ELEVATING WORK PLATFORM

### FEATURES

#### MEASUREMENTS

20.6 m (67' 7") working height  
Without Limited: 256kg (564 lb.) lift capacity  
Limited: 350kg (771 lb.) lift capacity

#### PRODUCTIVITY

1.83 m x 0.76 m (6' x 2' 6") steel platform  
4WD  
Solid tire  
Self-leveling platform  
Hydraulic platform rotation  
Fully proportional controls  
Drive enable  
Horn  
Hour meter  
Tilt alarm  
Lift and lower alarm  
360° turntable rotation  
Locking turntable covers  
0.56m tailswing  
Emergency power unit  
Alarm package  
Emergency stop  
Dual flashing beacons

#### POWER

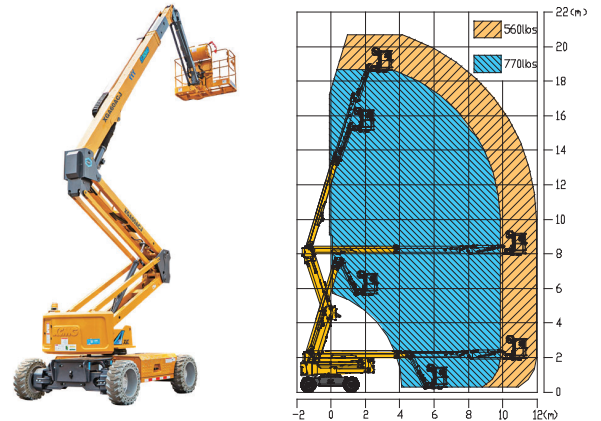
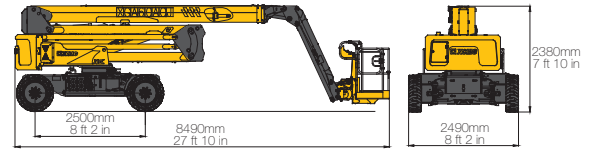
12V auxiliary power (DC)  
420 Ah/48 V DC power source

### HIGHLIGHT

- With "Σ" shaped articulated boom, this machine can able to improve operating efficiency; The turning radius is as low as 5m, with flexible maneuverability and challenging operation in narrow space;
- With long endurance design, this machine equippes with 48V, 420Ah large capacity battery, to provide longer endurance;
- Advanced four-wheel AC driving technology, steering differential control technology, greatly reduce tire wear and motor overload rate;
- The combined application of AC pump control and proportional control technology provides users with a more secure and stable operation experience;
- Green environmental protection, zero emission, low noise, no-marking driving, suitable for indoor clean environment construction;
- This machine is contralled directly through fully proportional control design, which is precise and effective. Whit tilt alarm of the lower frame, platform overload alarm and emergence lowering, flexibly start or stop could be achieve.

### OPTIONS

Power supply to platform  
Compressed air line to platform  
Anti-impact bracket for platform  
Rough terrain foam-filled tires



### MAIN PARAMETER

Item	Metric	Imperial
Overall dimensions (Lx Wx H)	8.49m x 2.49m x 2.38 m	27 ft 10 in x 8 ft 2 in x 7 ft 10 in
Working platform overall dimensions	1.83 x 0.76 x 1.15	6 ft x 2 ft 6 in x 3 ft 9 in
Maximum speed	4.8km/h	2.98 mph
Maximum theoretical gradeability	45%	45%
Minimum external turning radius	5.0m	16 ft 5 in
Ground clearance (center)	0.3m	12 in
Wheel base	2.5m	8 ft 2 in
Total machine weight	9100kg	20062 lbs
Maximum working height	20.6m	67 ft 7 in
Maximum platform height	18.6m	61 ft
Maximum working range	11.98m	39 ft 4 in
Maximum net spanning height	8m	26 ft 3 in
Luffing scope of Boom No. 1	0°~72°	0°~72°
Luffing scope of Boom No. 2	0°~73°	0°~73°
Luffing scope of crank arm	-64°~70°	-64°~70°
Platform slewing	160°	160°
Turntable slewing angle	360°	360°
Maximum load	256kg without limited / 350kg with limited	564lbs without limited / 771lbs with limited
Maximum rearward slewing	0.56m	1 ft 10 in
Control system	12V DC proportional control	12V DC proportional control
Emergency control unit	12V DC battery	12V DC battery
Tire	835*295 solid tire (optional fill off-road tire)	835*295 solid tire (optional fill off-road tire)
Weight detection	Standard configuration	Standard configuration
Axle balance system	Standard configuration	Standard configuration
Platform lowering speed	0.1m/s~ 0.3m/s	0.22mph~0.67mph
Telescopic speed of Boom No 2	0.1m/s~ 0.2m/s	0.22mph~0.44mph
Slewing speed	0.5 ~ 1 rpm	0.5 ~ 1 rpm
Power source	420 Ah/48 V (DC)	420 Ah/48 V (DC)
Auxilliary power unit	2.3kw/12 V (DC)	3.1hp/12 V (DC)
Hydarulic tank capacity	82L	82L