

MTA 12055 SERIES III

CONSTRUCTION telescopic handler



KEY FEATURES

- > 12,000 lbs. (5444 kg) maximum lift capacity
- > 55'5" (16.9 m) maximum lift height
- > 5,500 lbs. (3629 kg) lift capacity to 55'5" (16.9 m)
- > 120 hp (89 kW) Cummins diesel engine
- > High capacity combined with high lift and great forward reach
- > Simple F·N·R joystick operation
- > Front outriggers standard
- > Foam filled tires standard



MTA 12055 SERIES III

CONSTRUCTION telescopic handler

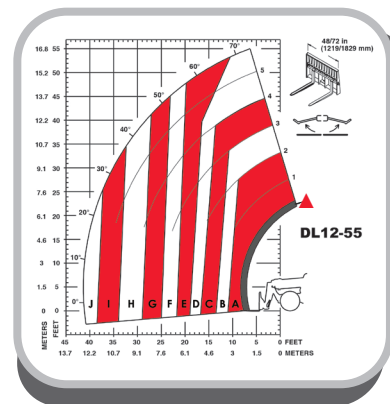
SPECIFICATIONS

CAPACITIES	Lift Capacity (kg)	12,000 lbs. (5444)
	Maximum Lift Height (m)	55'5" (16.9)
	Capacity at Maximum Lift Height (kg)	5,500 lbs. (2495)*
	Maximum Forward Reach (m)	40'9" (12.2)
	Capacity at Max. Forward Reach (kg)	2,000 lbs. (908)*
	Max. Reach Below Grade (mm)	2'10" (864)
ENGINE	Manufacturer	Cummins
	Power (kW)	120 hp (89)
	Aspiration	Turbocharged
	Model	QSF 3.8 Tier IV
	Rated Speed	2500 rpm
COMPONENTS	Transmission	Dana 4-speed Powershift
	Maximum Travel Speed (km/hr)	22.8 mph (36.7)
	Selective Steering	4-wheel 2-wheel Crab
	Hydraulically Actuated Brakes	Internal Wet-Disc Brakes
	Parking Brake	SAHR on Front Axle
HYDRAULIC SYSTEM	Axle Manufacturer	Dana
	Pump Type	Open-Center, Dual-Section
	Pump Flow (L/min)	43 gpm (162.8)
	System Pressure (bar)	3,000 psi (207)
	Hydraulic Tank Capacity (L)	41 gal (155)
GENERAL SPECIFICATIONS	Approximate Weight (kg)	31,840 lbs. (14442)
	Length – Less Forks (m)	20'9" (6.4)
	Width (m)	8'3" (2.5)
	Ground Clearance (mm)	16" (406)
	Wheelbase (m)	10'8" (3.3)
	Turning Radius (m)	12'2" (3.7)
	Overall Height (m)	8'6" (2.6)
	Frame Leveling	±10°
	Fuel Capacity (L)	30 gal. (114)
TIRE OPTIONS	14.00 x 24 Foam-Filled	
	14.00 x 24 Solid Rubber	
	14.00 x 24 Rock Tread, Foam-Filled	

*with outriggers down

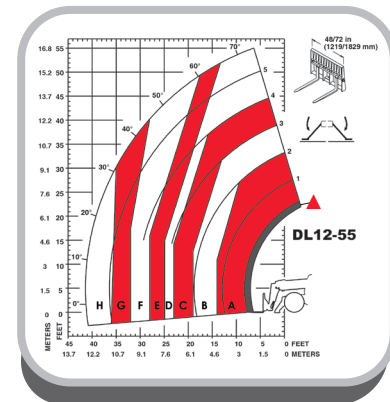
LOAD CHART

Load chart based on a 24" (610 mm) load center per ANSI/ITSDF B56.6



OUTRIGGERS UP

- ▲ 12,000 lbs. (5444 kg)
- A 10,000 lbs. (4536 kg)
- B 8,000 lbs. (3629 kg)
- C 6,000 lbs. (2722 kg)
- D 5,000 lbs. (2268 kg)
- E 4,000 lbs. (1814 kg)
- F 3,000 lbs. (1361 kg)
- G 2,000 lbs. (907 kg)
- H 1,000 lbs. (454 kg)
- I 500 lbs. (227 kg)
- J 250 lbs. (113 kg)



OUTRIGGERS DOWN

- ▲ 12,000 lbs. (5444 kg)
- A 10,000 lbs. (4536 kg)
- B 8,000 lbs. (3629 kg)
- C 6,000 lbs. (2722 kg)
- D 5,500 lbs. (2495 kg)
- E 5,000 lbs. (2268 kg)
- F 4,000 lbs. (1814 kg)
- G 3,000 lbs. (1361 kg)
- H 2,000 lbs. (907 kg)