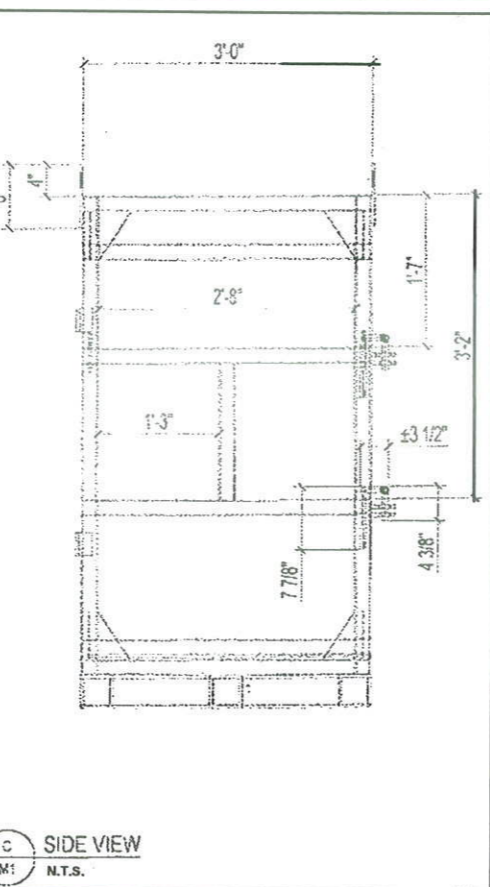
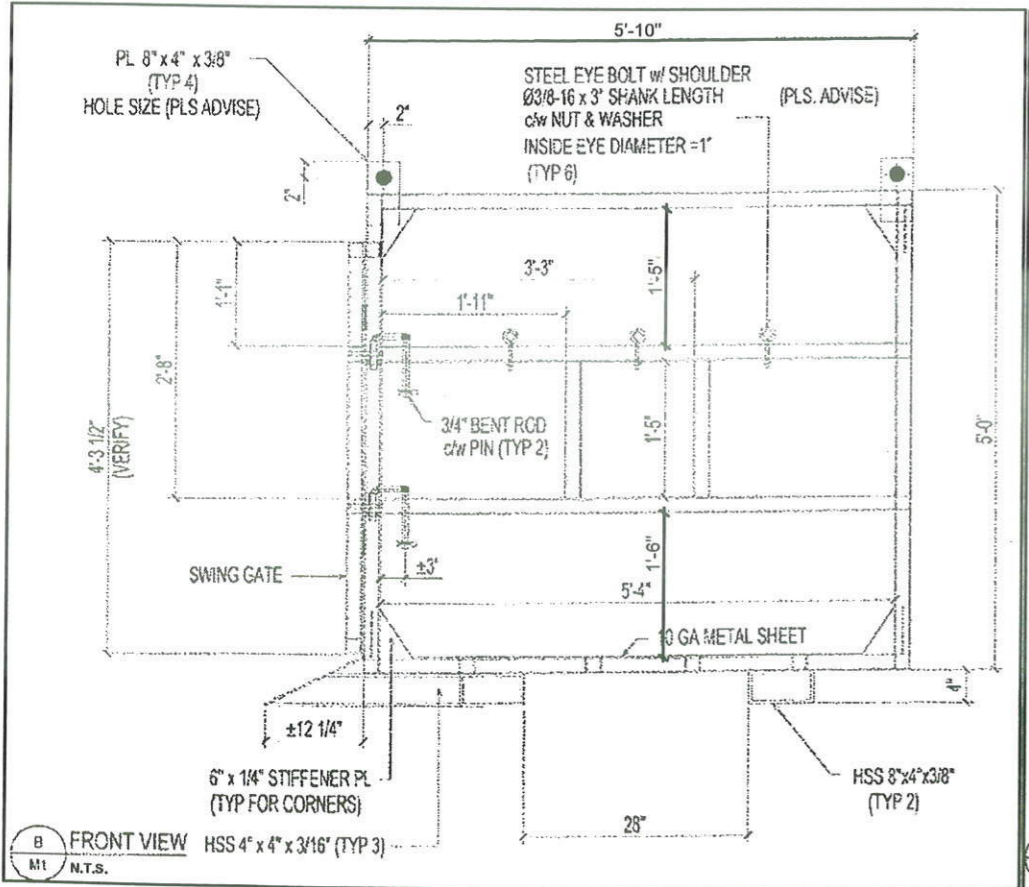
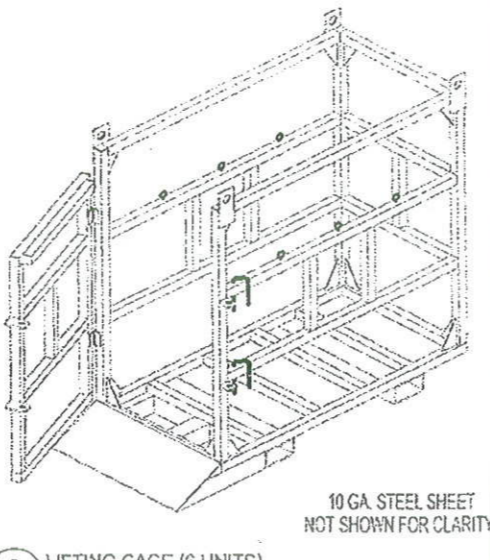
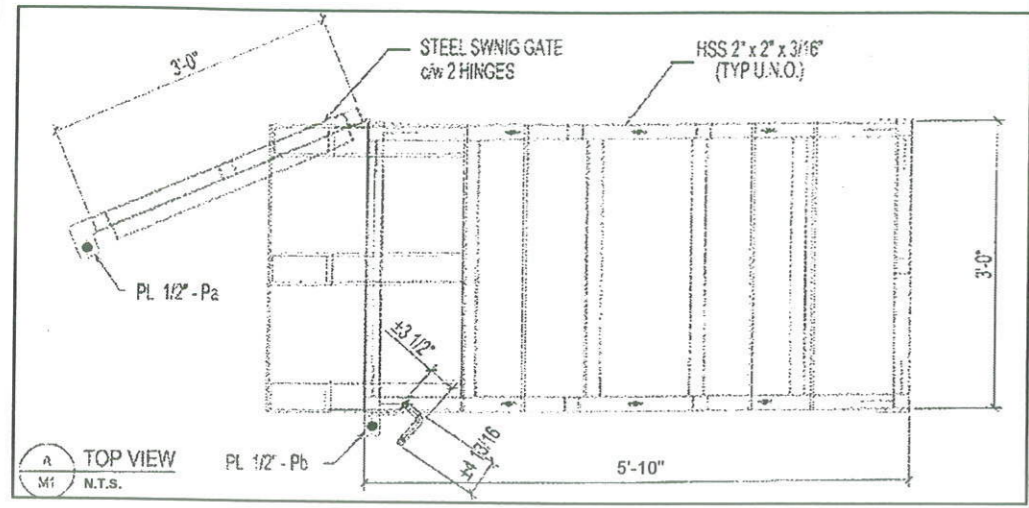
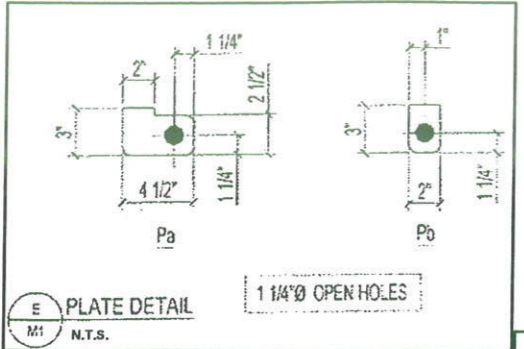


- GENERAL NOTES:**
1. FINISH: PRIME PAINTED GREY
  2. GRIND ALL WELDS AND SHARP EDGES SMOOTH
  3. ALL WELDS ARE 3/16" FULL PENETRATION FILLET
  4. ALL OPEN ENDED HSS SHALL BE CAPPED
  5. LIFTING GAGE CAPACITY = 1300 LBS

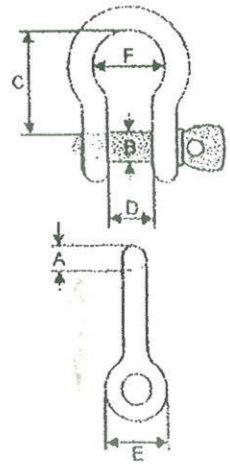


# SHACKLES

## 'Golden Pin'® Screw Pin Anchor Shackles

• Meeting the performance requirements of U.S. Fed. Spec. RR-C-271D, Type 4A, Grade A, Class 2

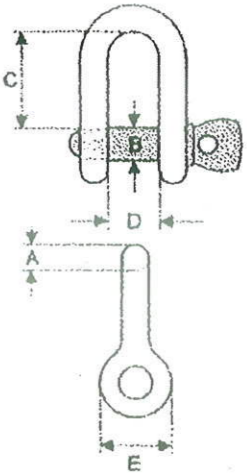
Size	Pin Diameter	Dimensions (Inches)					WLL (tons)	Weight (lbs)	Vanguard Code
		A	B	C	D	E			
3/16	1/4	0.93	0.39	0.59	0.64	1/3	0.08	2902 0012	
1/4	5/16	1.14	0.49	0.70	0.75	1/2	0.12	2902 0016	
5/16	3/8	1.23	0.53	0.83	0.80	3/4	0.18	2902 0020	
3/8	7/16	1.41	0.60	0.98	1.01	1	0.32	2902 0024	
7/16	1/2	1.70	0.72	1.06	1.13	1 1/2	0.45	2902 0028	
1/2	5/8	1.83	0.83	1.18	1.25	2	0.68	2902 0032	
5/8	3/4	2.36	1.06	1.55	1.67	3 1/4	1.36	2902 0040	
3/4	7/8	2.76	1.24	1.78	1.98	4 3/4	2.24	2902 0048	
7/8	1	3.29	1.42	2.09	2.25	6 1/2	3.50	2902 0056	
1	1 1/8	3.69	1.75	2.35	2.66	8 1/2	5.00	2902 0100	
1 1/8	1 1/4	4.23	1.80	2.71	2.79	9 1/2	7.65	2902 0108	
1 1/4	1 3/8	4.63	2.12	3.01	3.15	12	10.40	2902 0116	
1 3/8	1 1/2	5.17	2.30	3.32	3.60	13 1/2	13.80	2902 0124	
1 1/2	1 5/8	5.67	2.39	3.63	3.85	17	17.90	2902 0132	
1 3/4	2	7.06	2.96	4.23	4.99	25	27.90	2902 0148	
2	2 1/4	7.75	3.31	5.11	5.59	35	42.70	2902 0200	
2 1/2	2 7/10	10.25	4.00	5.75	7.00	55	85.00	2902 0232	



## 'Golden Pin'® Screw Pin Chain Shackles

• Meeting the performance requirements of U.S. Fed. Spec. RR-C-271D, Type 4B, Grade A, Class 2

Size	Pin Diameter	Dimensions (Inches)			WLL (tons)	Weight (lbs)	Vanguard Code
		A	B	E			
1/4	5/16	0.83	0.47	0.71	1/2	0.11	3912 0016
5/16	3/8	0.98	0.47	0.75	3/4	0.17	3912 0020
3/8	7/16	1.22	0.63	0.96	1	0.24	3912 0024
7/16	1/2	1.50	0.75	1.06	1 1/2	0.40	3912 0028
1/2	5/8	1.61	0.83	1.22	2	0.59	3912 0032
5/8	3/4	2.01	1.10	1.57	3 1/4	1.20	3912 0040
3/4	7/8	2.41	1.25	1.81	4 3/4	2.20	3912 0048
7/8	1	2.80	1.42	2.13	6 1/2	3.20	3912 0056
1	1 1/8	3.16	1.77	2.36	8 1/2	4.80	3912 0100
1 1/8	1 1/4	3.50	1.85	2.69	9 1/2	6.80	3912 0108
1 1/4	1 3/8	3.97	2.05	3.00	12	9.00	3912 0116
1 1/2	1 5/8	4.80	2.39	3.68	17	16.00	3912 0132
2	2 1/4	6.75	3.25	5.00	35	36.00	3912 0200



**Note:** If the pin, after a 1/4 turn, remains hard to remove, there is a good chance that the shackle has been overloaded beyond the designed working load limit (WLL) and it, therefore, must be discarded.

- GENERAL NOTES:**
- THE CONTRACTOR SHALL VERIFY ALL DIMENSIONS ON SITE AND REPORT ANY DISCREPANCIES TO THE CONSULTANT BEFORE PROCEEDING WITH WORK. DO NOT SCALE DRAWINGS.
- ALL DRAWINGS AND SPECIFICATIONS ARE THE PROPERTY OF THE CONSULTANT AND MUST BE RETURNED AT THE COMPLETION OF THE WORK.
- THIS DRAWING IS NOT TO BE USED FOR CONSTRUCTION UNTIL SIGNED BY CONSULTANTS.

**DATE:**

THE CONTRACTOR SHALL BE RESPONSIBLE FOR THE ARRANGEMENT OF ALL NECESSARY INSPECTION.

ALL WORK ARE TO COMPLY WITH REGULATIONS AND BY-LAW SET FORTH BY THE AUTHORITIES HAVING JURISDICTIONS.

THE CONTRACTOR AND HIS SUB-TRADES SHALL FOLLOW THE INSPECTIONS AND SCHEDULES SET FORTH BY THE OWNER OF THE PROPERTY.

THE CONTRACTOR SHALL BE RESPONSIBLE FOR THE PROTECTION OF ALL EXISTING BASE BUILDING SYSTEM AND EQUIPMENT DURING CONSTRUCTION.

ALL DIMENSIONS ARE FROM FACES OF FINISHED PARTITIONS (UNLESS OTHERWISE INDICATED).

FLAME SPREAD RATING AND SMOKE DEVELOPED CLASSIFICATION FOR ALL INTERIOR FINISHING MATERIALS NOT TO EXCEED THE MAXIMUM AS SPECIFIED IN THE ONTARIO BUILDING CODE.

READ THIS DRAWING IN CONJUNCTION WITH DRAWINGS: ARCH, STRUCTURAL, MECHANICAL, ELECTRICAL AND OTHER RELEVANT DRAWINGS AND SPECIFICATIONS.

No.	Date	Revision	D/rev.	Ch'd.

**MCDDB**  
 38-38 CEREMONIAL DR.  
 MISSISSAUGA, ON  
 L5R 3G8  
 TEL: (416) 878-6483  
 FAX: (905) 232-3200  
 email: jay@mcddb.com  
 www.mcddb.com

**PROJECT:**  
 COMPRESSED GAS CAGES

**CUSTOMER:**  
 STEPHENSONS RENTAL SERVICES  
 1350 CREDIT STONE ROAD,  
 CONCORD, ONTARIO, CANADA

**TITLE:**  
 1. LIFTING GAGE VIEWS  
 2. SCREW PIN ANCHOR SHACKLES SPECIFICATIONS.

SCALE:	AS SHOWN	PROJECT No.
DRAWN BY:	MM	DWG. No.
CHK BY:	A.K.	<b>A01</b>
DATE:	DEC. 2012	CAD FILE: 1350 CREDIT STONE RD.